



CORPORATE PRESENTATION – APRIL 2025  
TSXV: **SAG** | OTCQB: **SAGGF**

An aerial photograph of a large, winding lake nestled within a valley. The surrounding hills and forests are covered in trees with vibrant autumn foliage in shades of orange, red, and yellow. The sky is a clear, pale blue.

**UNLOCKING CANADA'S COPPER POTENTIAL**

# DISCLAIMER

## Cautionary Note Regarding Forward-looking Information

This presentation is intended to be strictly informational. Sterling Metals Corp. ("Sterling Metals" or the "Company") reserves the right, at its sole discretion, to modify all or any part of this presentation without any liability or notification to any person. This presentation includes statements which may be considered forward-looking. These forward-looking statements are based largely on the expectations of management of the Company as at the date hereof and are subject to uncertain events and circumstances which are beyond the control of the Company. Actual results could differ materially from those anticipated. You acknowledge that any reliance on or use by you of this information shall be at your own risk. In no event shall the Company, its directors, officers, employees, agents or advisors be liable for any damages of any kind arising out of or relating to the use of this presentation, including, but not limited to, any loss of income or profits, incidental, special, indirect or consequential or any similar losses or damages, whether or not advised of the possibility of damages, and on any theory of liability, arising out of or in connection with the use of the information contained herein. This document does not constitute, nor should be construed as, an offer or solicitation of an offer for the purchase of any securities of the Company, nor investment advice or an offering memorandum. Readers should review all of the Company's public disclosure including the technical report on its property. No securities commission or similar authority or stock exchange in any jurisdiction has in any way passed on any of the information contained herein.

## Market and Industry Data

This presentation includes market and industry data that has been obtained from third party sources, including industry publications. Sterling Metals believes that the industry data is accurate and that the estimates and assumptions are reasonable, but there is no assurance as to the accuracy or completeness of this data. Third party sources generally state that the information contained therein has been obtained from sources believed to be reliable, but there is no assurance as to the accuracy or completeness of included information. Although the data is believed to be reliable, Sterling Metals has not independently verified any of the data from third party sources referred to in this presentation or ascertained the underlying economic assumptions relied upon by such sources.

## Market and Industry Data (continued)

References in this presentation to reports and publications should not be construed as depicting the complete findings of the entire referenced report or publication. Sterling Metals does not make any representation as to the accuracy of such information.

## Technical Disclosure and Qualified Person

Jeremy Niemi, P.Geol., Senior Vice President of Exploration and Evaluation to Sterling Metals, and a Qualified Person within the meaning of National Instrument 43-101 Standards of Disclosure for Minerals Projects, has reviewed and approved the technical information presented herein.

Certain data disclosed in this presentation is related to historical drilling and sampling results. Sterling has not undertaken any independent investigation of the sampling, nor has it independently analyzed the results of the historical exploration work in order to verify the results. Sterling considers these historical drill results relevant as the Company is using this data as a guide to plan exploration programs. The Company's current and future exploration work includes verification of the historical data through drilling.

# OVERVIEW

## PATH TOWARDS A TIER 1 COPPER DISCOVERY 1 HOUR NORTH OF THE US BORDER



### SCALE

30km of copper porphyry potential along the edge of the Midcontinent Rift



### GRADE

Historic high-grade production with untapped potential at depth



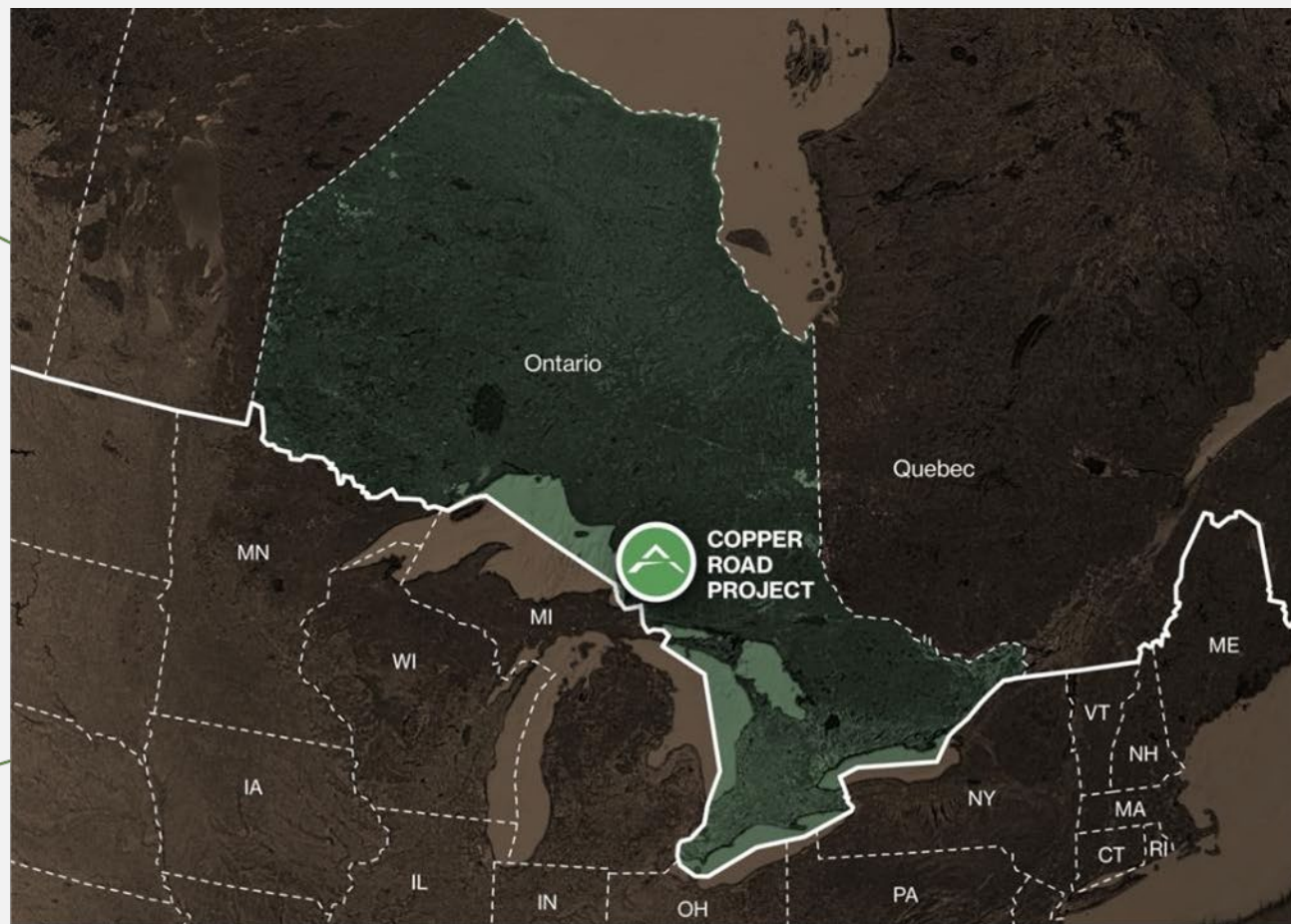
### INFRASTRUCTURE

Mining friendly jurisdiction off the Trans Canada Highway



### TEAM

Entrepreneurial team with strong technical expertise in copper and exceptional access to capital

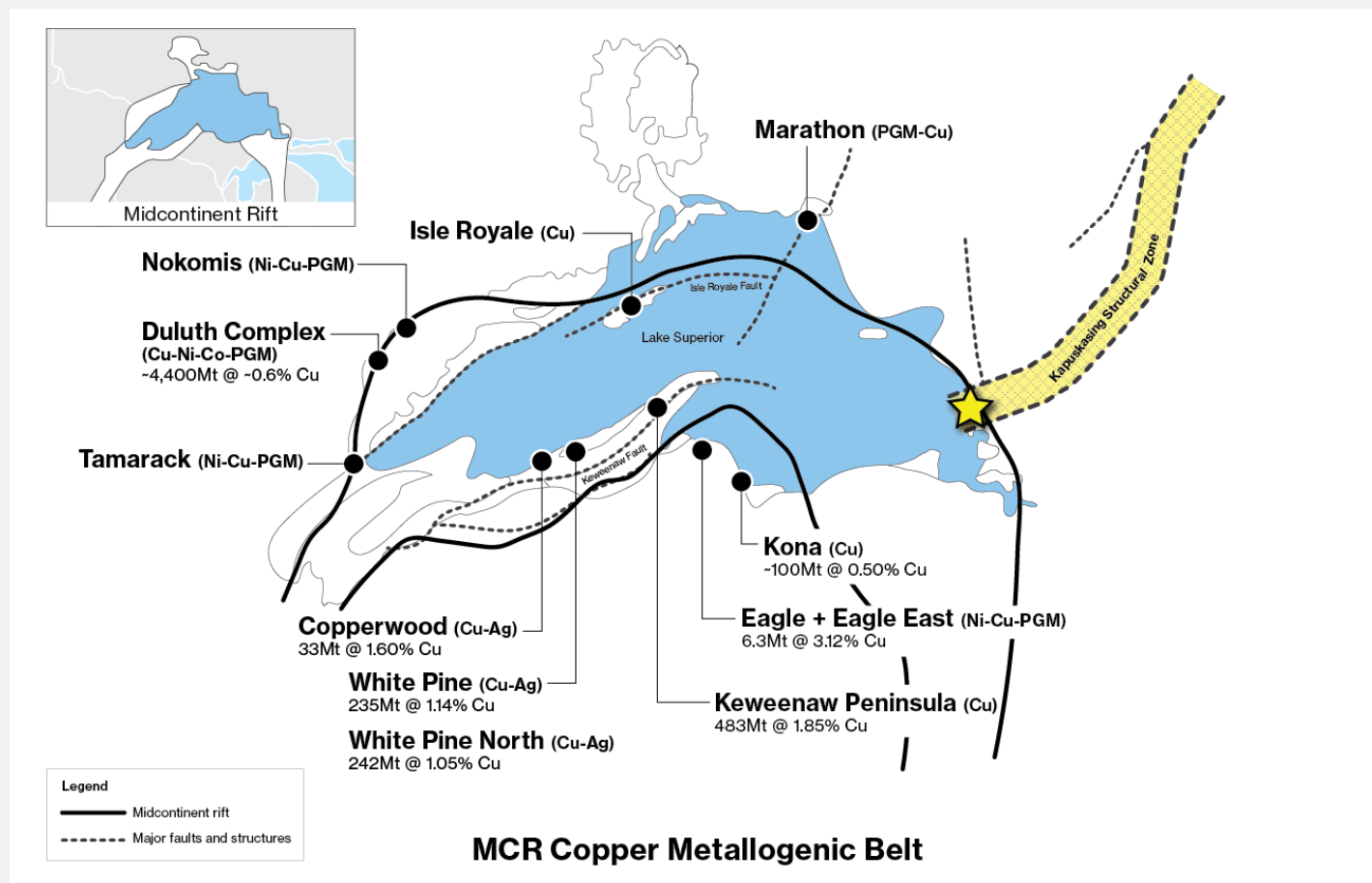






# COPPER ROAD PROJECT

## MIDCONTINENT RIFT: +150 YEARS OF COPPER PRODUCTION



**COPPER ROAD PROJECT\*** -  
Historical resources spanning 30km

Historical production of **7.6Mt** at  
**1.97%Cu**

Historical resources of  
**265mt @ 0.15%Cu** (Tribag)  
and **20Mt @0.19%Cu** (Jogran)

\*Perello J., Silitoe R.H., and Creaser R.A., 2020, Mesoproterozoic porphyry copper mineralization at Mamainse Point, Ontario, Canada in the context of Midcontinent rift metallogeny, Ore Geology Reviews 127

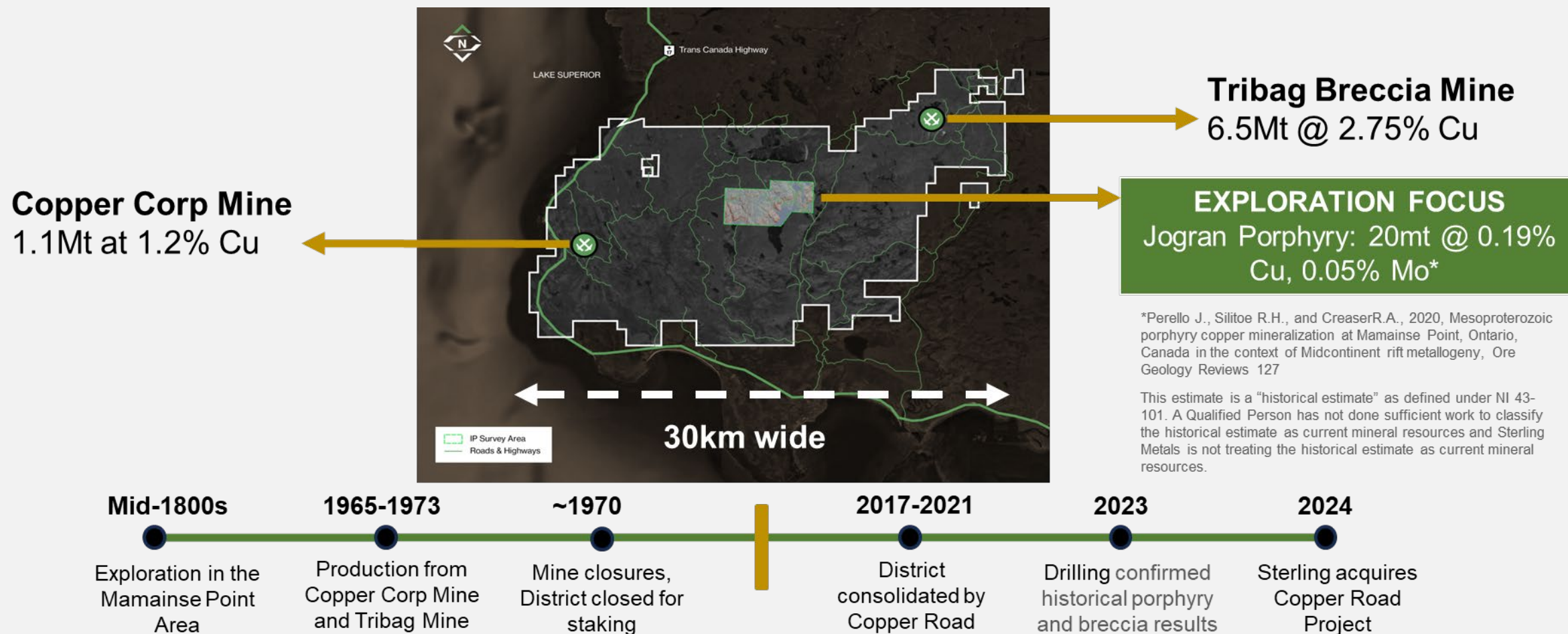
This estimate is a "historical estimate" as defined under NI 43-101. A Qualified Person has not done sufficient work to classify the historical estimate as current mineral resources and Sterling Metals is not treating the historical estimate as current mineral resources.





# COPPER ROAD PROJECT

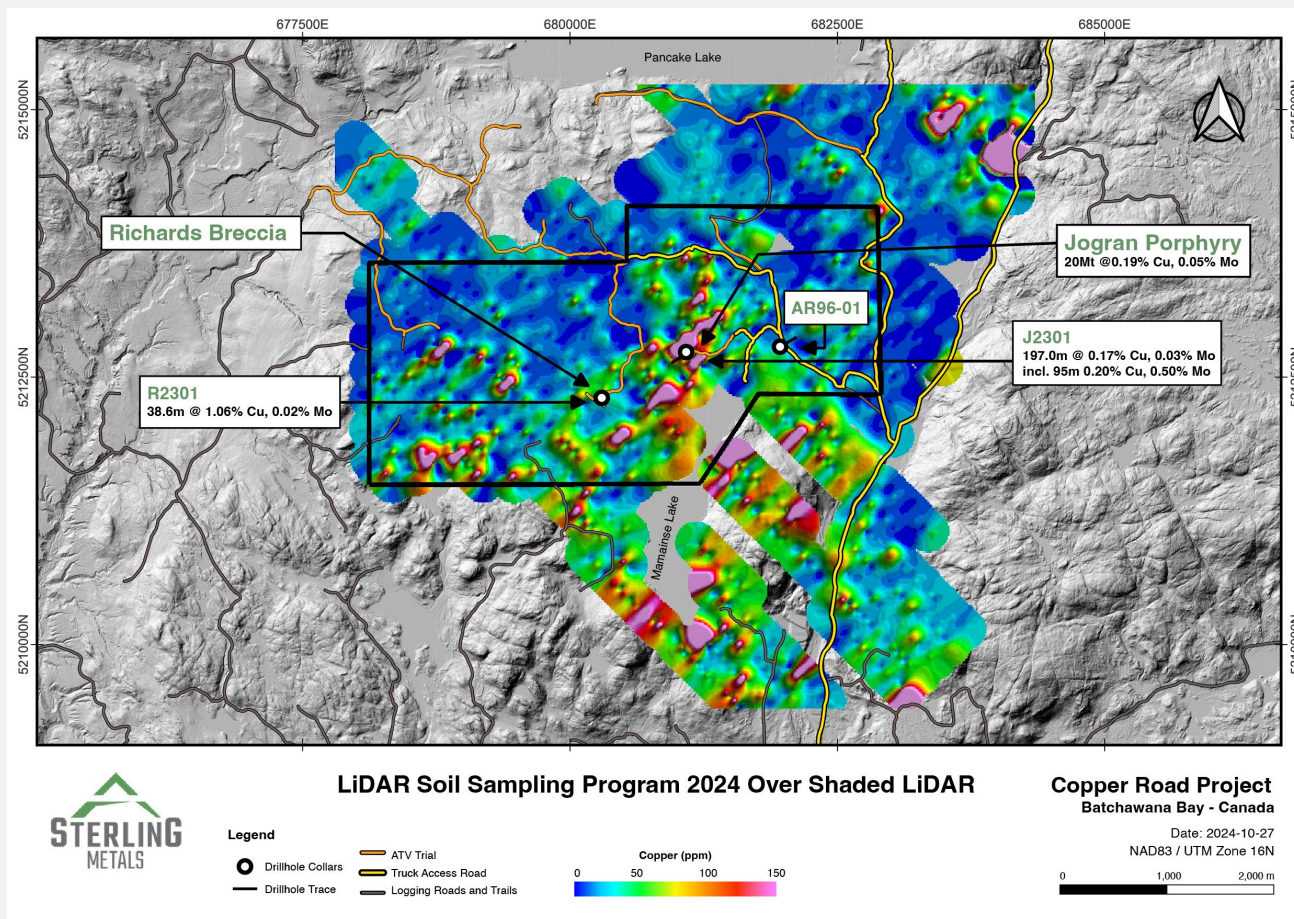
## FRACTURED OWNERSHIP AND LIMITED SYSTEMATIC WORK BRINGS OPPORTUNITY FOR DISCOVERY





# COPPER ROAD PROJECT

## 2024 WORK PROGRAM HIGHLIGHTS JOGRAN PORPHYRY IN MIDDLE OF MINERALIZED CENTRAL CORRIDOR OF PROPERTY



- 4km trend of soils in the +95<sup>th</sup> percentile open to south
- Jogran Porphyry area has seen no modern and systematic exploration to date despite shallow 20Mt 0.19% Cu and 0.05% Mo historic resource\*
- Sterling's recent work program consisted of ~2,000 soils, 23km<sup>2</sup> of IP/Resistivity, reprocessing of 700km of ZTEM and review and digitization of +60 years of historical work
- **Jogran is just the edge of a much larger copper system**

\*Perello J., Silitoe R.H., and Creaser R.A., 2020, Mesoproterozoic porphyry copper mineralization at Mamainse Point, Ontario, Canada in the context of Midcontinent rift metallogeny, Ore Geology Reviews 127

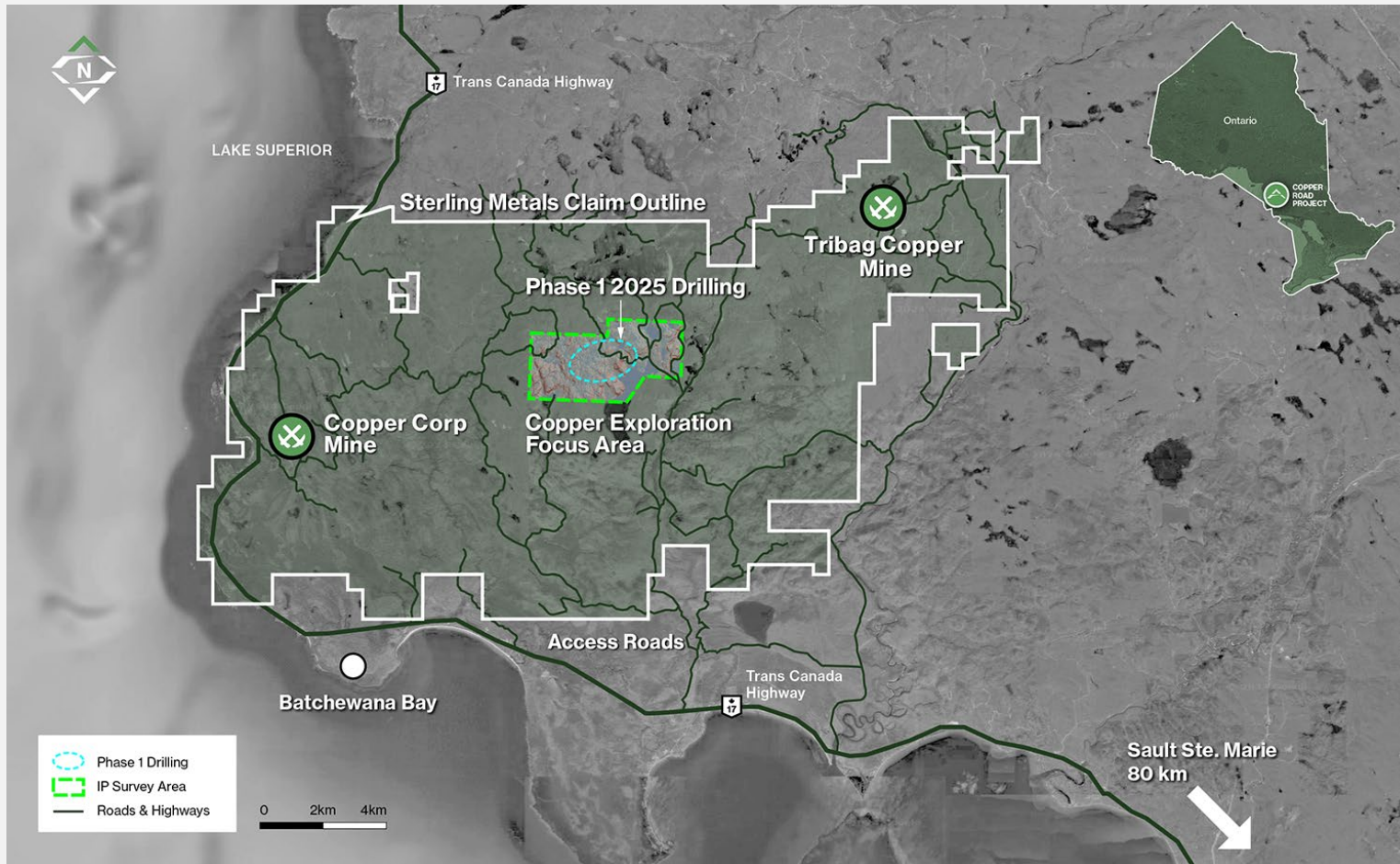
This estimate is a "historical estimate" as defined under NI 43-101. A Qualified Person has not done sufficient work to classify the historical estimate as current mineral resources and Sterling Metals is not treating the historical estimate as current mineral resources.





# COPPER ROAD PROJECT

## PHASE I DRILLING UNDERWAY



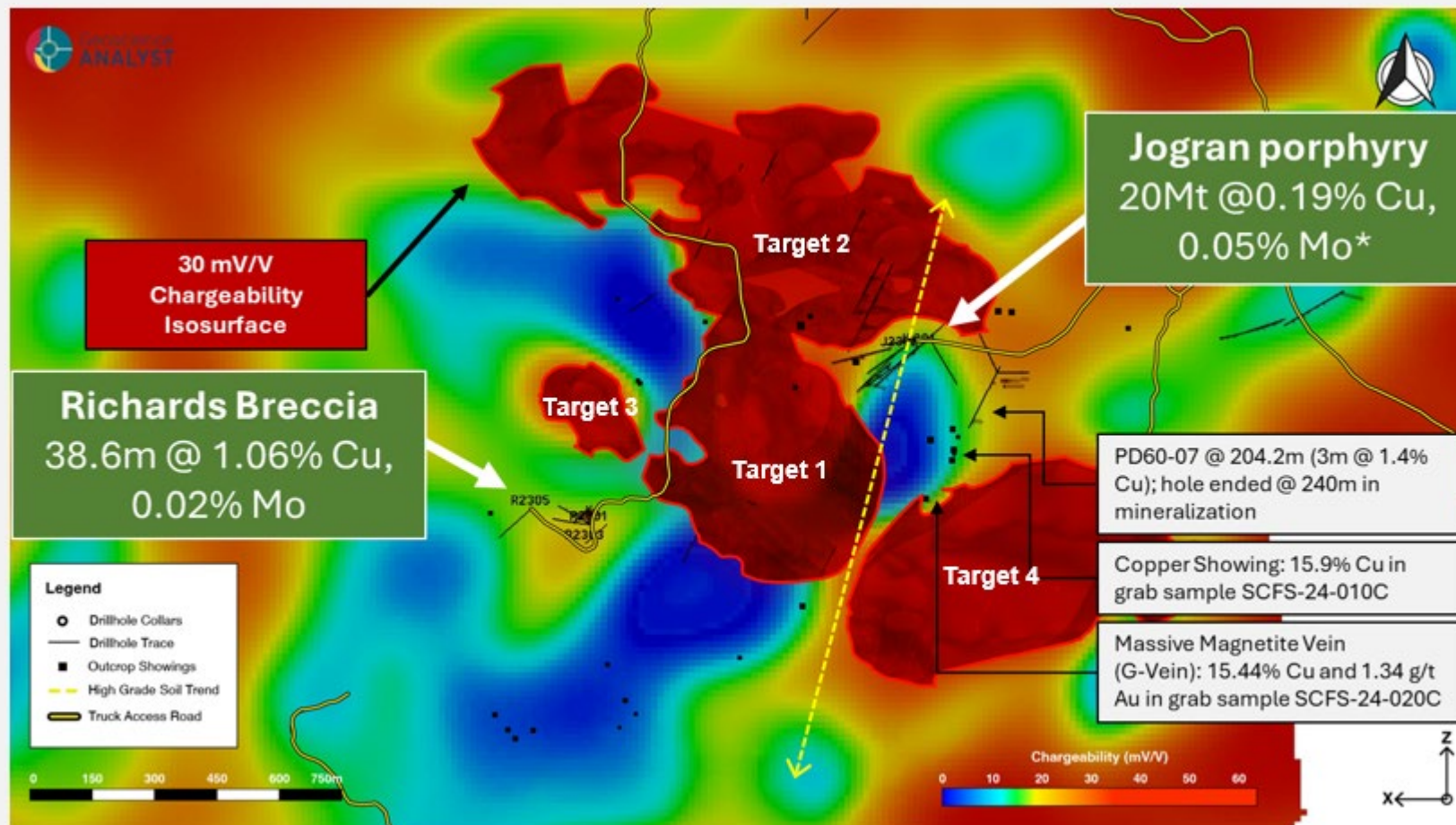
- Minimum 2,000m diamond drill program underway.
- 4 initial high-priority targets in the heart of the Project, covering a 2.5km x 1.5km x 1.5km footprint.
- Goal to confirm and expand upon historical results while unlocking the broader potential of the project.





# JOGRAN PORPHYRY

## CHARGEABILITY AND SOILS INDICATE THE SCALE OF THE SYSTEM IS MUCH LARGER THAN JUST THE JOGRAN PORPHYRY



- Cluster of large priority targets extending over 2km
- Correlates with high grade soil trend
- On edge of historical resources and drilling
- Chargeability targets correlate with resistivity lows connected to larger potential feeder at depth

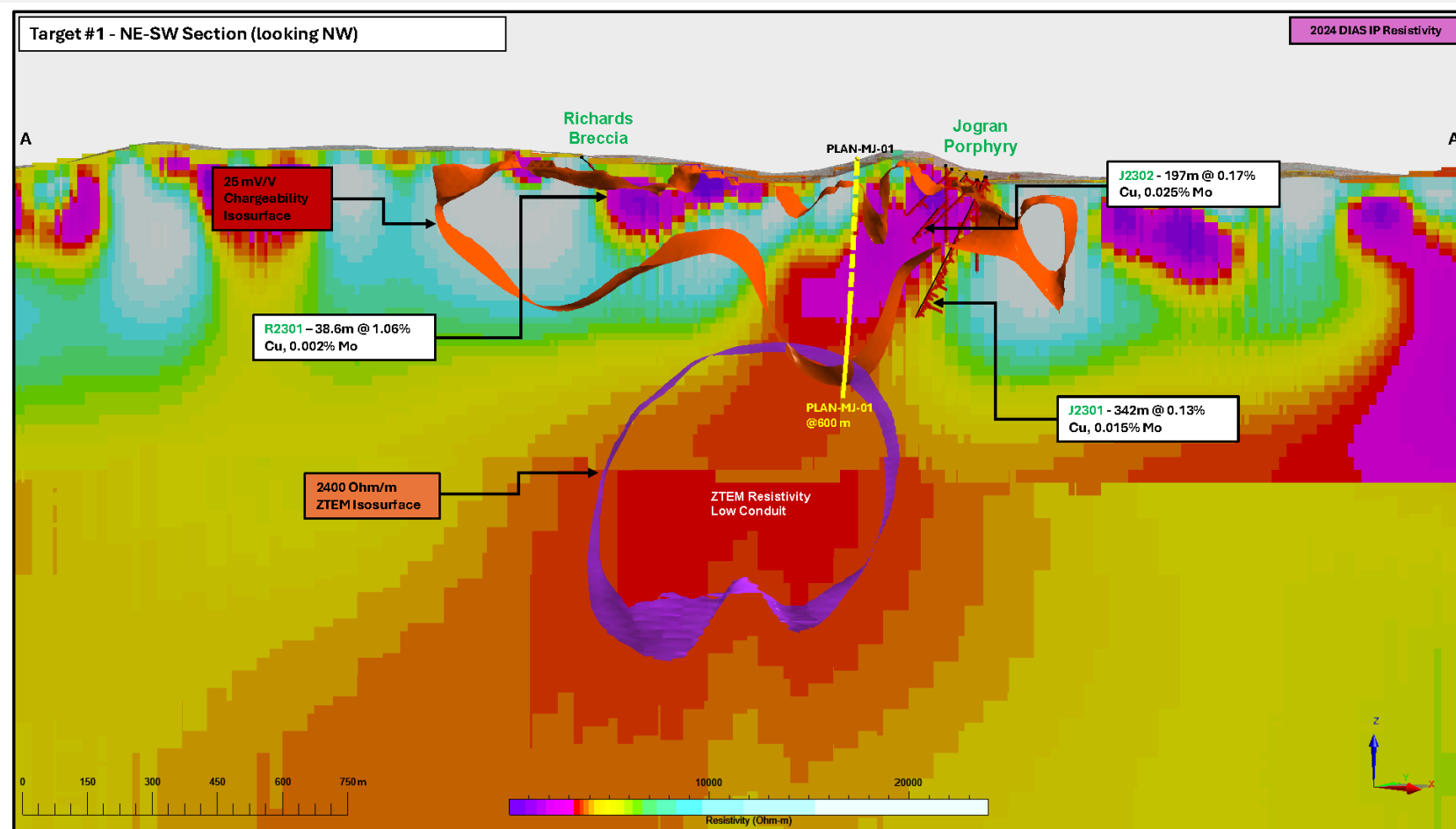
\*Perello J., Silitoe R.H., and Creaser R.A., 2020, Mesoproterozoic porphyry copper mineralization at Mamainse Point, Ontario, Canada in the context of Midcontinent rift metallogeny, Ore Geology Reviews 127

This estimate is a "historical estimate" as defined under NI 43-101. A Qualified Person has not done sufficient work to classify the historical estimate as current mineral resources and Sterling Metals is not treating the historical estimate as current mineral resources.



## JOGRAN PORPHYRY

# IP AND RESISTIVITY HIGHLIGHT NEAR SURFACE ZONES CONNECTING TO LARGE-SCALE COPPER PORPHYRY POTENTIAL AT DEPTH



Resistivity lows highlight potential zones of connected sulfide accumulation

Near surface IP/Resistivity from 2024 program connects to 2.5 x 1.5 x 1.5km potential porphyry source identified by 2015 ZTEM survey

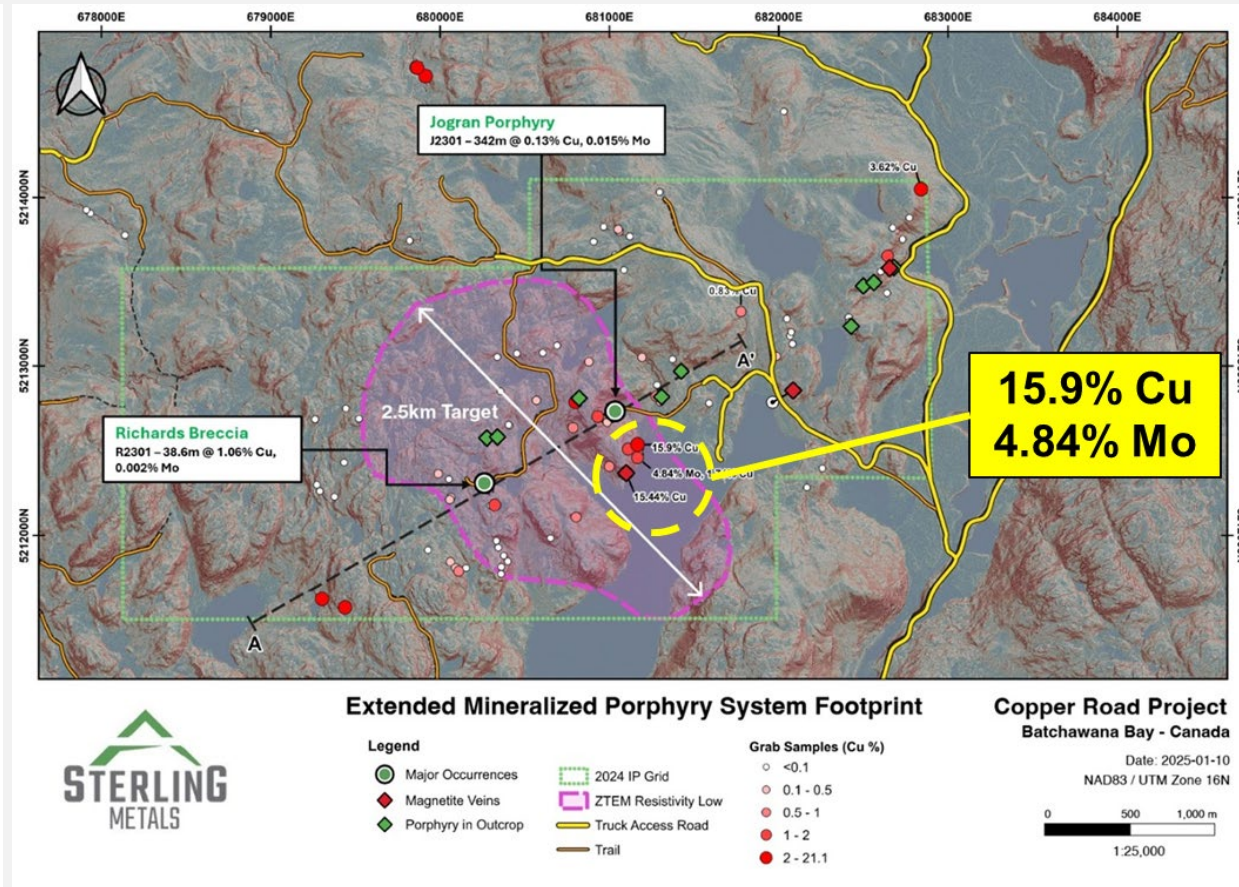
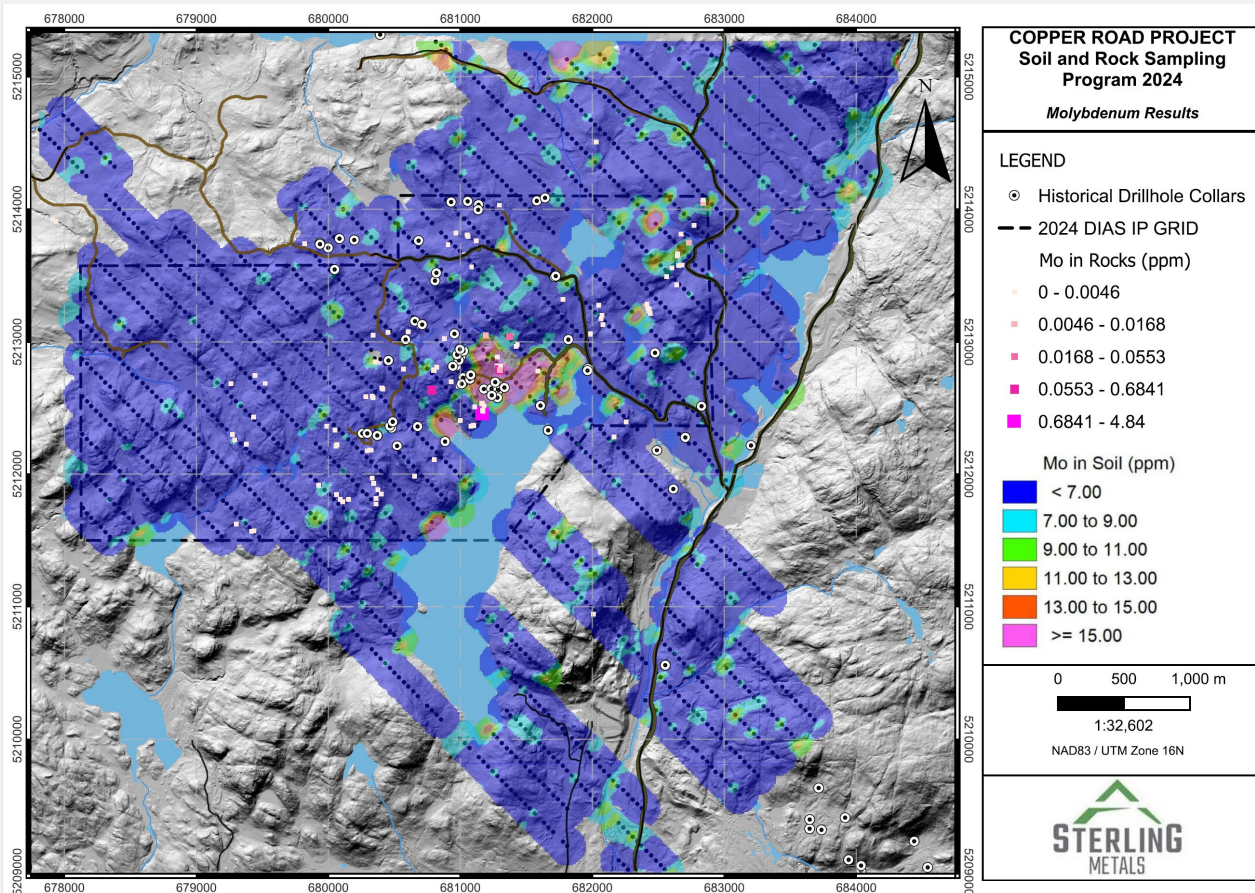
**ZTEM anomaly comes to surface in highest grade soils and outcrop**





# SCALE OF SYSTEM MATCHES SCALE OF ANOMALY

3 PHASES OF HIGH-GRADE MINERALIZATION AS WELL AS MOLYBDENUM IN SOILS  
CORRESPOND TO SURFACE EXPRESSION OF POTENTIAL PORPHYRY FEEDER

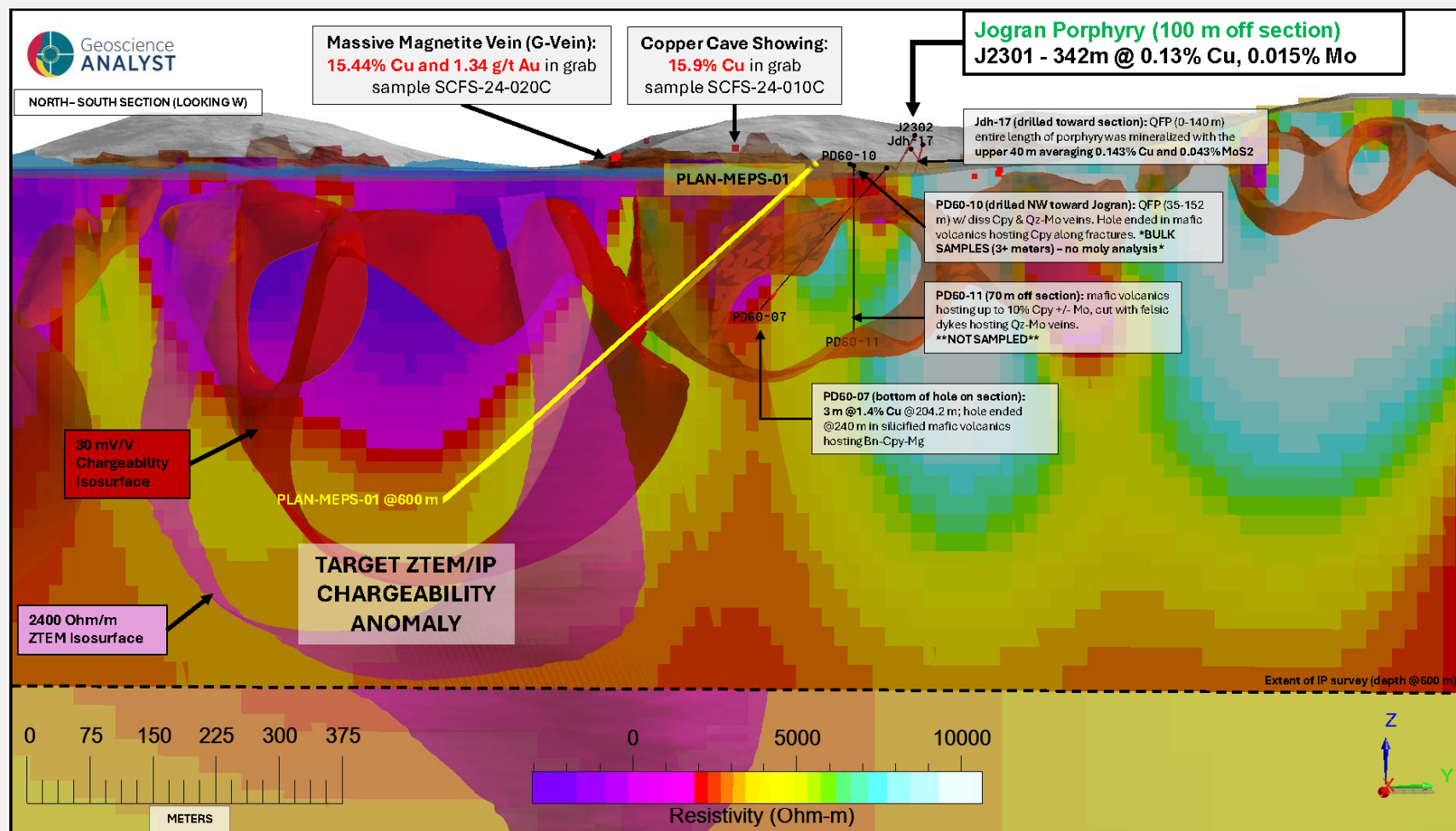






# JOGRAN PORPHYRY

## POTENTIAL SURFACE EXPRESSION OF PORPHYRY SOURCE SHOWS MANY COMPELLING FEATURES



- Historical drilling by Phelps Dodge in the 60s offers support for presence of mineralized mafic volcanics
- Drill hole PD60-07 terminated 150m before the anomaly



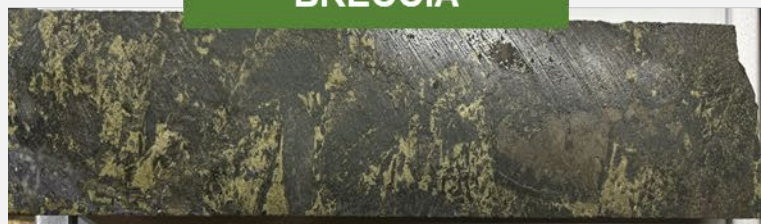
## COPPER ROAD PROJECT

# HISTORIC DRILLING REVEALS MULTIPLES TYPES OF STRONG MINERALIZATION ACROSS 2KM ON THE EDGES OF THE RESISTIVITY ANOMALY

2 KM



**RICHARDS  
BRECCIA**



R2304

From 83.75m

**8.0% Cu, 0.02% Mo and  
1.1 g/t Au over 0.7m**

**JOGRAN  
PORPHYRY**



J2302

From 10.00m

**1.0% Cu, 0.03% Mo over 1m**

**AR96-01**



AR9601

From 242.8m

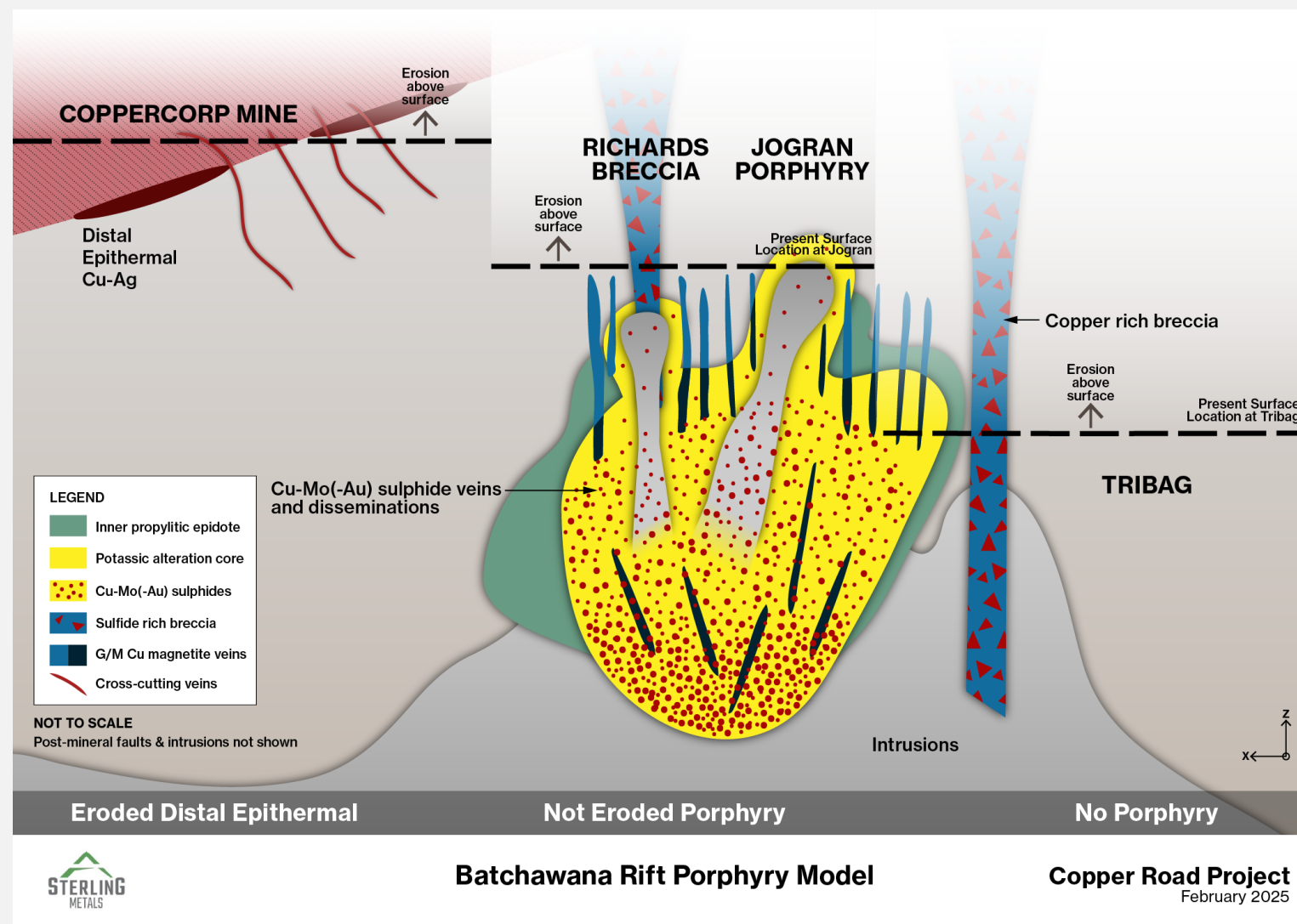
**3.9% Cu, 0.84 g/t Au over 1.07m**



# COPPER ROAD PROJECT

## RIFT PORPHYRY MODEL

The surface expression of mineralization, potassic alteration in drill core and the presence of high-grade copper magnetite G veins suggests an optimal erosional level setting at the Richards/Jogran Porphyry Target Area

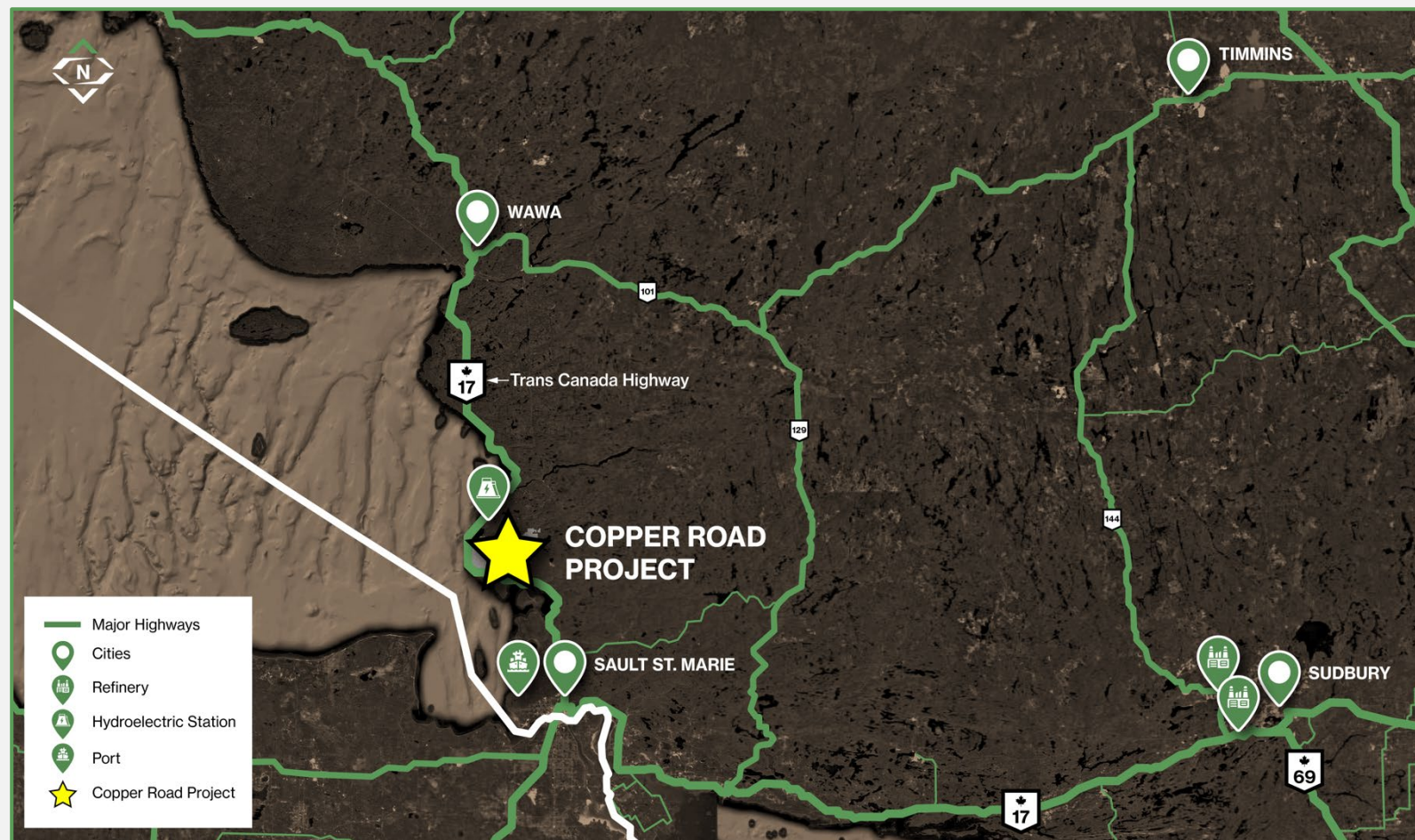






# COPPER ROAD PROJECT

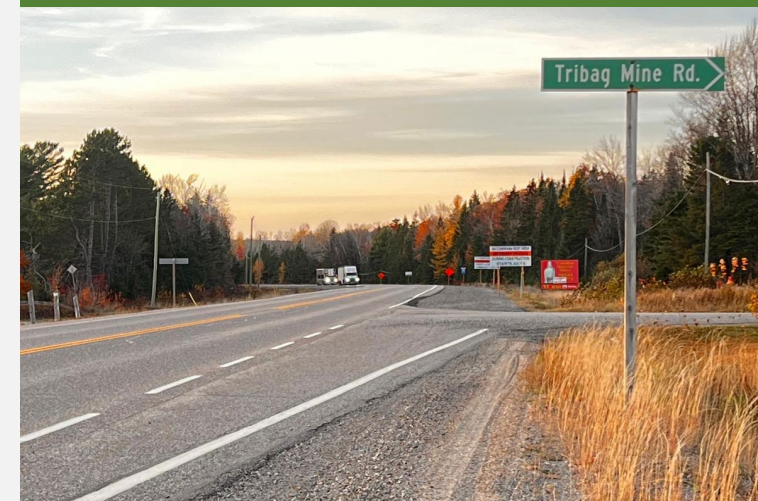
## MAJOR COST ADVANTAGE DUE TO INFRASTRUCTURE AND ACCESS



### LOGGING ROAD ACCESS



### DIRECT ACCESS FROM TRANS-CANADA HIGHWAY





## PROVEN TEAM

# A HISTORY OF TECHNICAL AND CAPITAL MARKETS SUCCESS

### BOARD OF DIRECTORS AND ADVISORS

- |                                                |                                                   |
|------------------------------------------------|---------------------------------------------------|
| ■ <b>Mark Goodman</b><br>Chairman              | ■ <b>Stephen Keith</b><br>Director                |
| ■ <b>Richard Patricio</b><br>Advisor           | ■ <b>Mark Raguz</b><br>Advisor                    |
| ■ <b>Dr. Neil O'Brien</b><br>Technical Advisor | ■ <b>Dr. Stephen Piercey</b><br>Technical Advisor |

### MANAGEMENT

- |                                                            |                                             |
|------------------------------------------------------------|---------------------------------------------|
| ■ <b>Mathew Wilson</b><br>CEO and Director                 | ■ <b>Dennis Logan</b><br>CFO                |
| ■ <b>Jeremy Niemi</b><br>SVP Exploration and<br>Evaluation | ■ <b>Chris Irwin</b><br>Corporate Secretary |







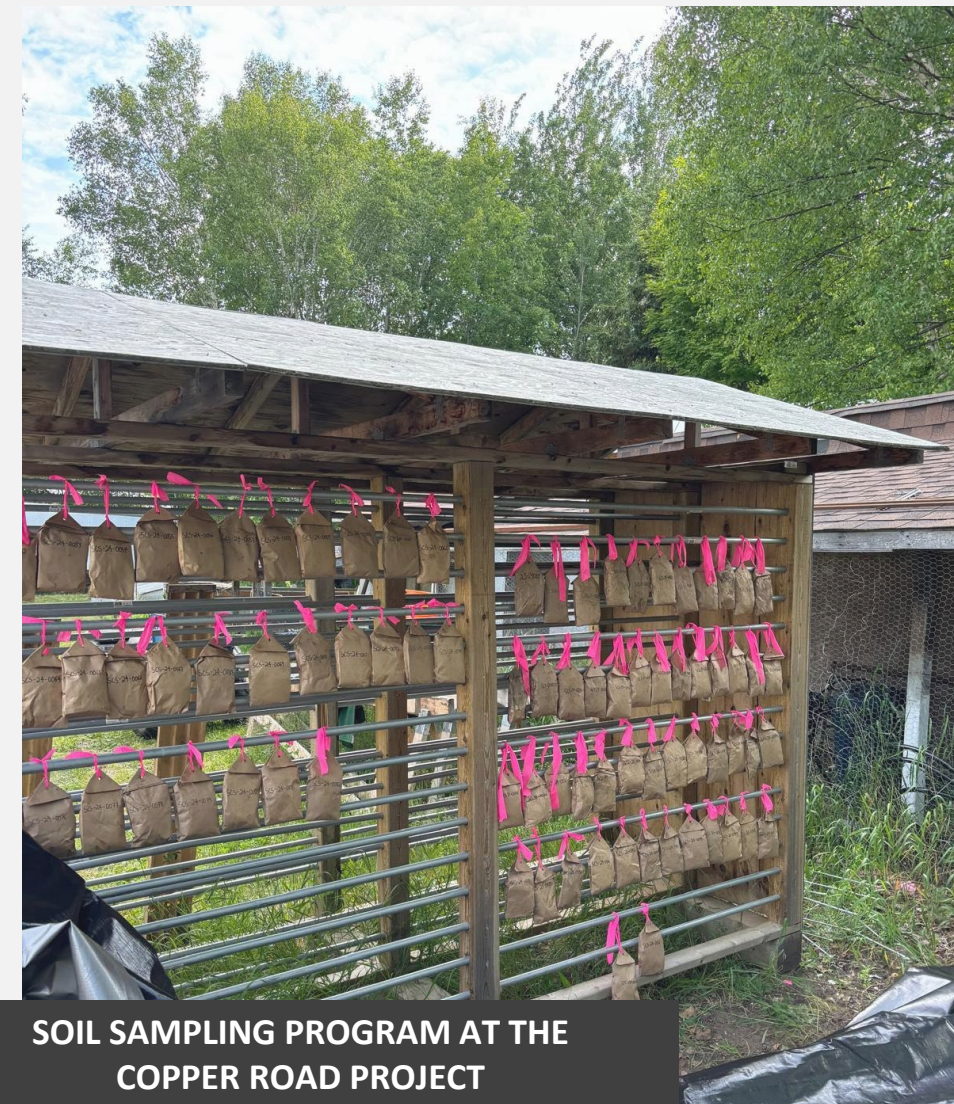
# COMPANY SNAPSHOT

<b>Share Price</b> (April 21, 2025)	C\$0.30
<b>52-Week Low/High</b>	C\$0.24 – C\$1.00
<b>Basic Shares Outstanding<sup>1</sup></b>	30.9M
<b>Options<sup>2</sup></b>	3.0M
<b>Warrants<sup>3</sup></b>	3.1M
<b>FD Shares Outstanding</b>	37.0M
<b>Basic Market Capitalization</b>	C\$9.7M
<b>Cash and Cash Equivalents</b> (December 31, 2024)	C\$1.4M
<b>Subsequent Financing</b> (Completed March 25, 2025)	C\$1.5M
<b>Debt</b>	None

1. Based on public disclosure as of April 21, 2025, and includes a \$1.5M financing of 6,082,000 private placement units completed on March 25, 2025

2. Based on public disclosure as of March 26, 2025 with an average exercise price of \$0.63

3. Includes 98,213 warrants at \$0.65 expiring October 23, 2025 and 3,041,000 warrants and 33,000 broker warrants at \$0.40 expiring March 25, 2027







**SOIL SAMPLING PROGRAM AT THE  
COPPER ROAD PROJECT**





## CONTACT US

-  416-643-3889
-  [info@sterlingmetals.ca](mailto:info@sterlingmetals.ca)
-  [@sterlingmetals](https://twitter.com/sterlingmetals)
-  [www.sterlingmetals.ca](http://www.sterlingmetals.ca)





# APPENDIX

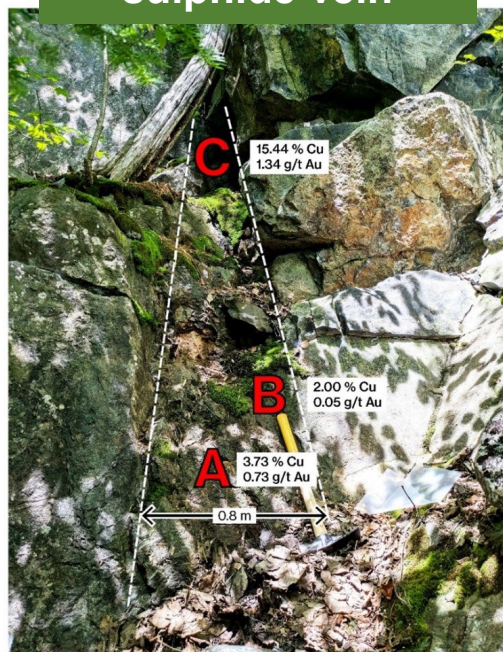




## COPPER ROAD PROJECT

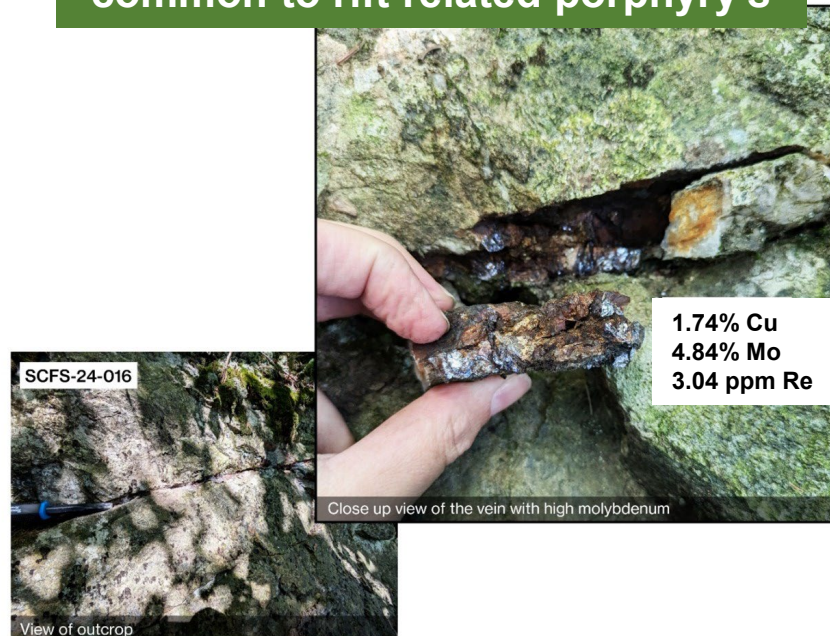
### ADDITIONAL PICTURES OF WHERE THE POTENTIAL PORPHYRY FEEDER COMES TO SURFACE AND PRESENTS 3 PHASES OF MINERALIZATION

Hydrothermal  
quartz-magnetite-  
sulphide vein



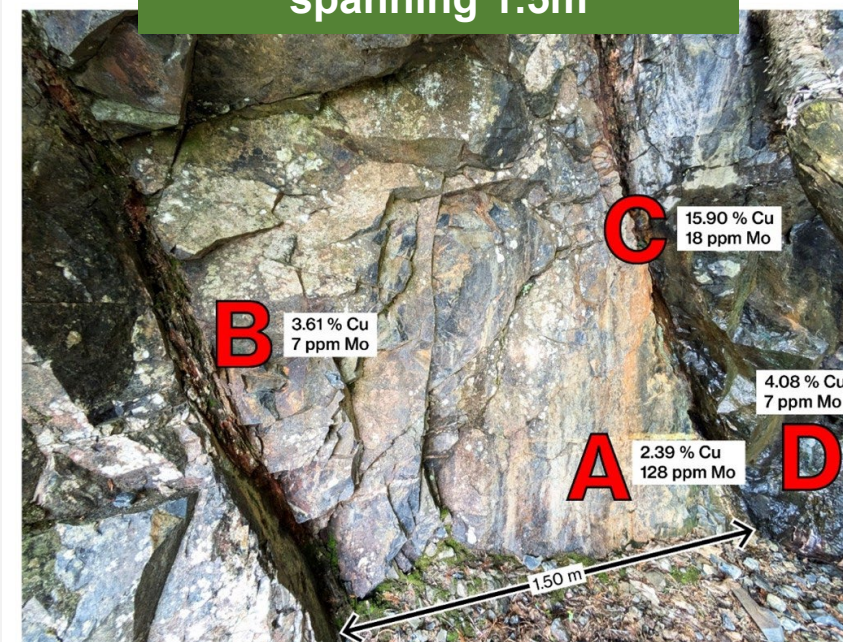
Outcrop Sample SCFS-24-020 Copper Road Project  
October 2024

Moly vein with high-grade sulphide  
mineralization and rhenium –  
common to rift related porphyry's



Outcrop Sample SCFS-24-016 Copper Road Project  
October 2024

Steeply dipping copper  
sulphide rich veins  
spanning 1.5m

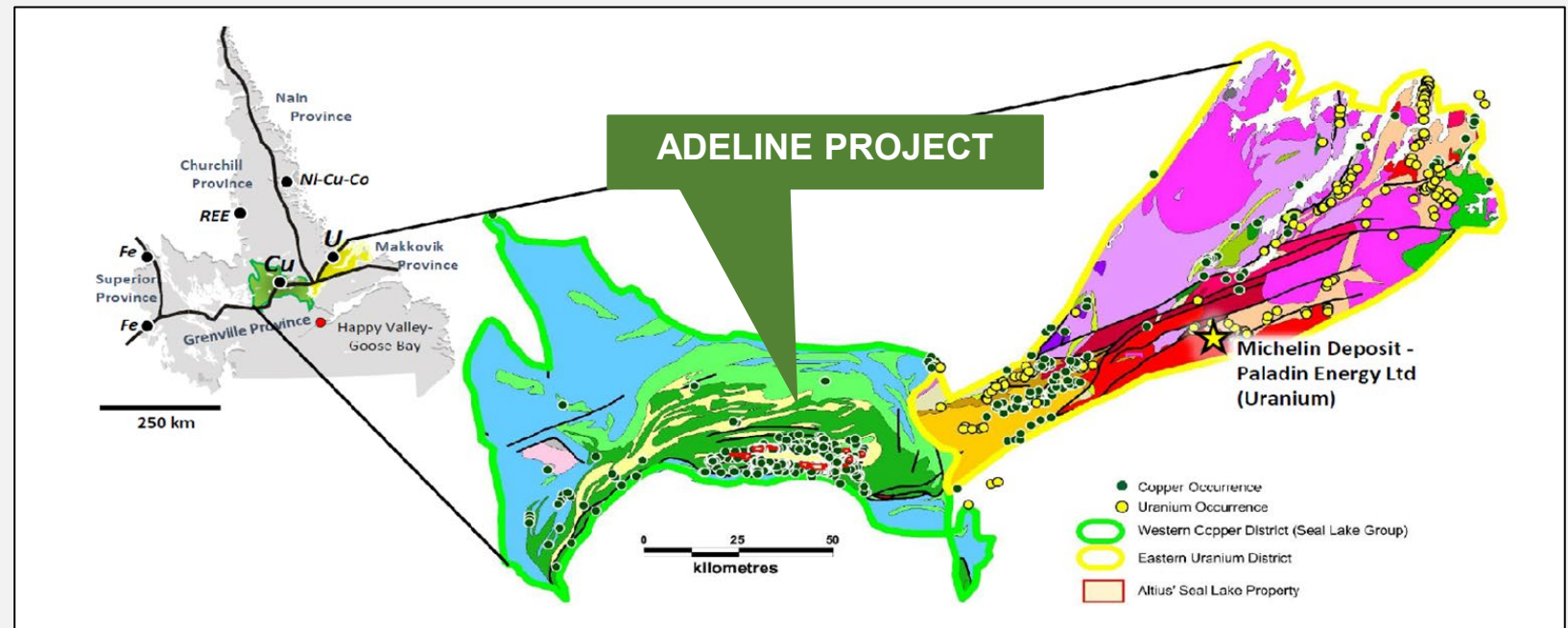


Cave Showing Copper Road Project  
October 2024

# ADELINE PROJECT

## NEW FRONTIER – ONE OF THE ONLY PROTEROZOIC BASINS IN THE WORLD THAT HASN'T BEEN SYSTEMATICALLY EXPLORED

- CMB is a globally significant Cu-U province located at a triple junction between three geological terranes
- 260km long belt endowed with high-grade copper, uranium, silver, REE and molybdenum showings
- Western part of the CMB is dominated by copper occurrences hosted within the Seal Lake Group (Adeline Project)



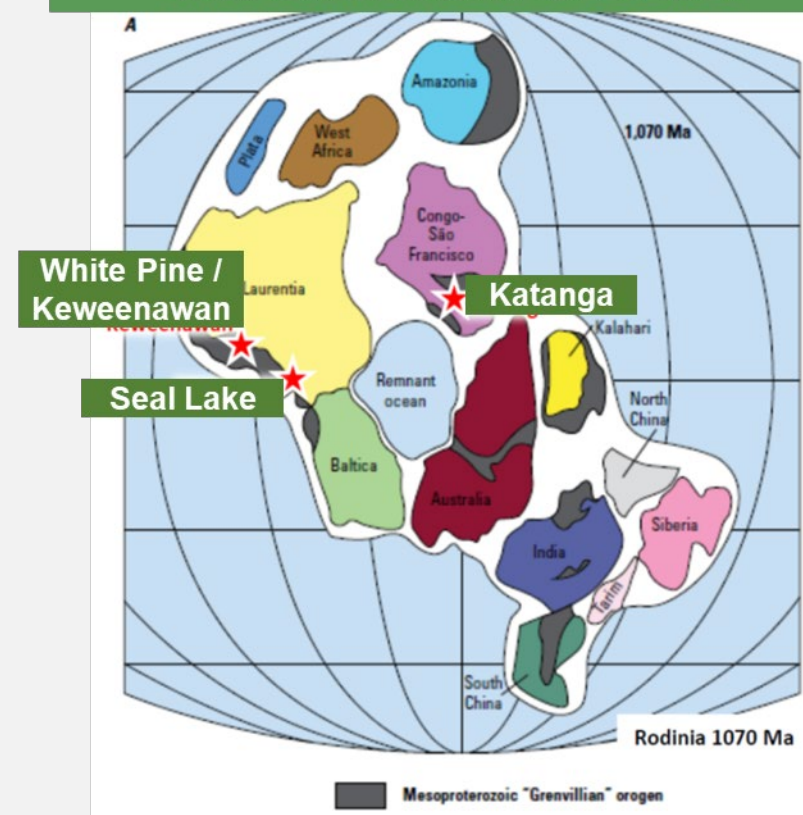


# ADELINE PROJECT

## KEY ROOTS OF FORMATION

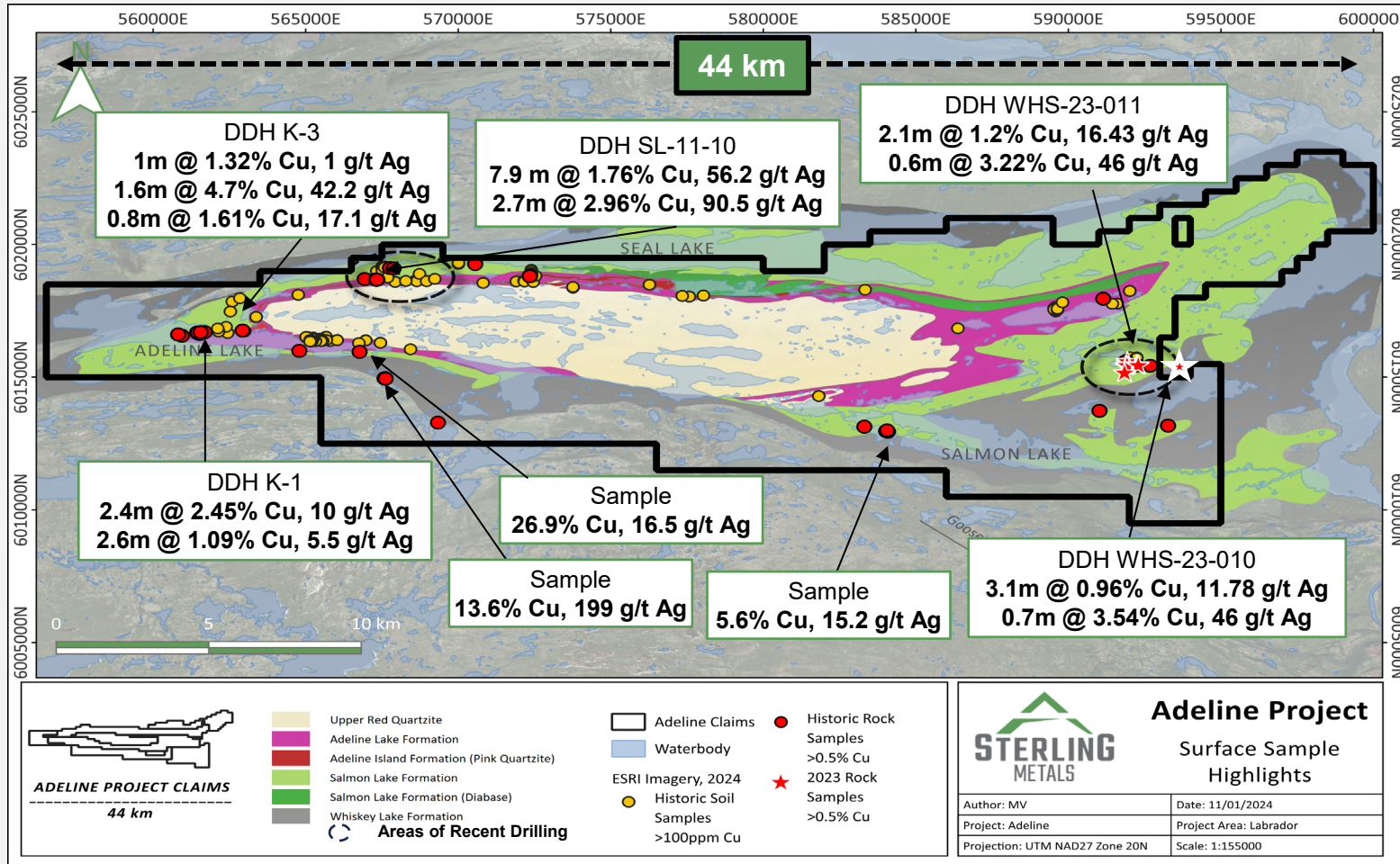
- ✓ **Rock Type:** Host rocks are reduced facies marine or lacustrine rocks such as green, black, or gray shale, siltstone, thinly laminated tidal facies, or reefoid carbonate rocks, and dolomitic shales.
- ✓ **Age Range:** Most deposits favour Middle and Late Proterozoic rocks worldwide.
- ✓ **Depositional Environment:** Continental clastic sedimentary basins succeeded by epicontinental shallow-marine or lacustrine basin within 30° of the paleo-equator.
- ✓ **Tectonic Setting:** An intracontinental rift or aulacogen.
- ✓ **Mineralogy:** Chalcocite and other  $\text{Cu}_2\text{S}$ - $\text{CuS}$  minerals + bornite. Deposits may be zoned with centers of chalcocite-bornite, outer zones of chalcopyrite-pyrite, and peripheral galena-sphalerite.

OROGENIC ACTIVITY BETWEEN 1.3 AND 1.0 GA FORMED COPPER DEPOSITS ASSOCIATED WITH SEDIMENTATION AND BASALTIC VOLCANISM IN INTRA-CONTINENTAL RIFTS GLOBALLY



# ADELINE PROJECT

## DRILLING AND SAMPLING SHOWS DEMONSTRATED POTENTIAL FOR FUTURE DISCOVERIES



- Adeline Formation and Salmon Lake Formation are targets for copper mineralization
- Regional fluid flow caused by basin inversion tectonics during Grenville Orogeny
- Fluids are concentrated where key structures focused fluid flow into stratigraphic redox traps

Source: Assessment Report "2011 Exploration Summary Report, Seal Lake Project, Labrador, Canada" LAB 1649, May 3, 2011, Revised July 19, 2011.

The data disclosed is related to historical surface sampling results. Sterling has not undertaken any independent investigation of the sampling, nor has it independently analyzed the results of the historical exploration work in order to verify the results. Sterling considers these historical results relevant as the Company is using this data as a guide to plan exploration programs. The Company's current and future exploration work includes verification of the historical data through drilling and surface sampling. The reader is cautioned that rock grab samples are selective by nature and may not represent the true grade or style of mineralization across the property.

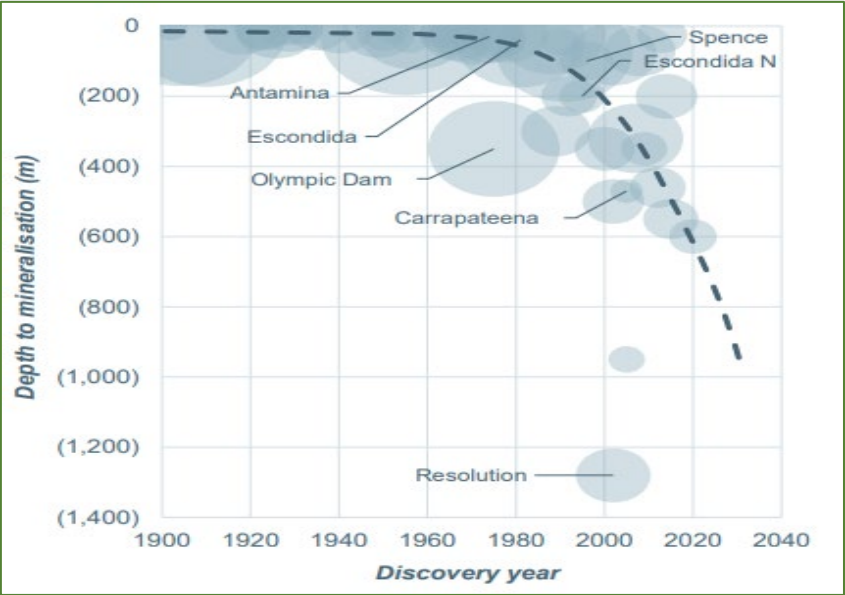




# COPPER IS AN ESSENTIAL RESOURCE

## CANADA IS IN NEED OF NEW COPPER DISCOVERIES

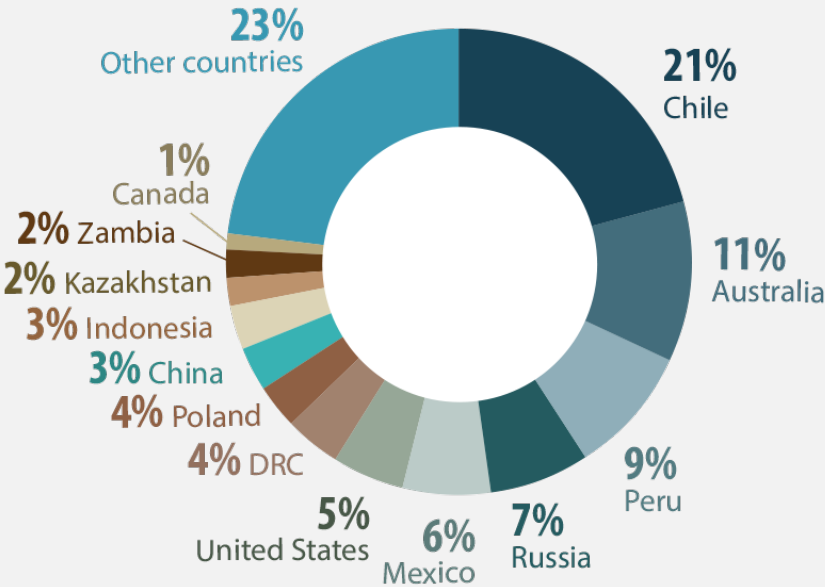
MAJOR DISCOVERIES ARE BECOMING LESS COMMON AND GETTING DEEPER



SELECTED MAJOR DEPOSITS,  
>3MT CONTAINED CU

Source: MinEx Consulting; BHP analysis

CANADA HAS PROVEN GEOLOGICAL ENDOWMENT BUT ACCOUNTS FOR ONLY 1% IN WORLD RESERVES



WORLD RESERVES OF COPPER  
BY COUNTRY (2022)

Source: <https://natural-resources.canada.ca/our-natural-resources/minerals-mining/minerals-metals-facts/copper-facts/20506>